

# DSOC 3140

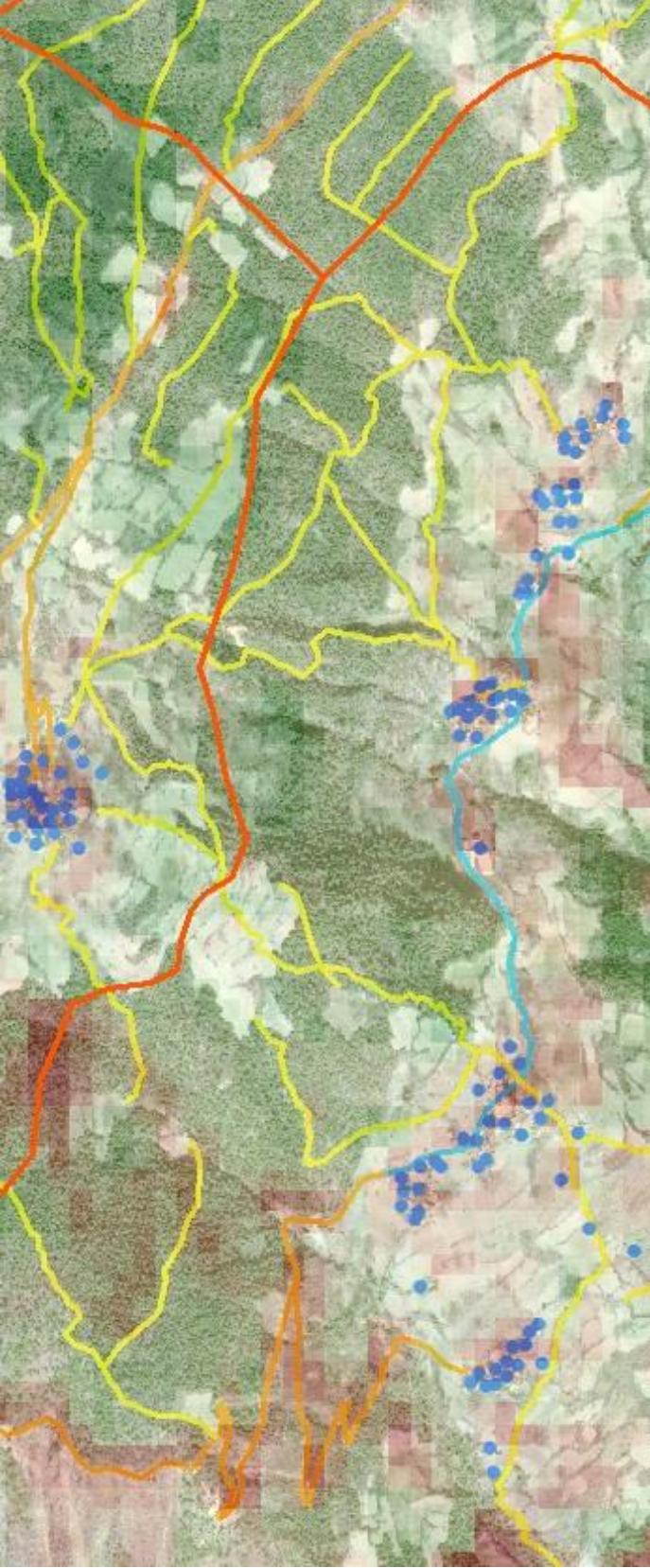
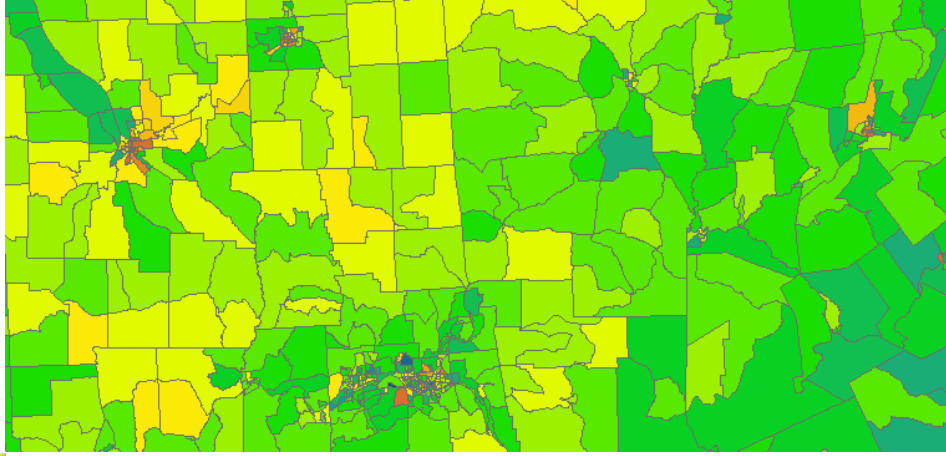
## Spatial Thinking, GIS, and Related Methods

Fall 2018

Lecture MW 11:10am

Lab F 11:40am-1:35pm

Instructor: John Aloysius Zinda



Everything happens in space. Where people are and where events occur helps us better understand the social and environmental dynamics of our changing world. Analyzing and presenting these things in maps involves tough choices with tangible impacts.

In this course, we will think about human action in space and learn to make maps.

In-class lectures and activities will provide conceptual and technical foundations for spatial analysis. We will work through the tough choices that go into mapping the world. Lab sessions and assignments will give students a practical introduction to using GIS software to map and analyze spatial patterns.

By the way, making maps is fun, challenging, and intellectually rewarding.

By the time we are done, you will be able to

- Explain conceptual issues and choices involved in making maps and understanding phenomena that take place across space.
- Use GIS software to create informative maps and justify your choices in displaying information on those maps.
- Gather data, conduct an analysis, and present findings regarding a spatial phenomenon.

Questions? [jaz65@cornell.edu](mailto:jaz65@cornell.edu)